



**112 Wardell Street Ashgrove QLD**

4 2 3

112 Wardell Street (access via 7 St Vincent Street).

Now here's a wonderful opportunity!

Let's talk about the location firstly. Accessed through a discreet laneway off St Vincent's Street, the house sits among some very attractive inner city homes. Ashgrove central, offering supermarkets and strip shops, is just a few minutes drive and there's some good public transport options going into the City.

A delightful family area, where there are a range of schools nearby, at both junior and senior levels, with family parks and bike tracks all easily accessible.

[For full version visit the website](https://www.burlingtonproperty.com.au)

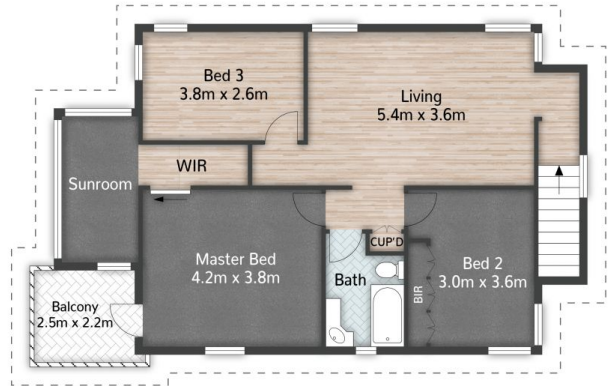
**Type** : House  
**Land Size** : 658 sqm  
**View** : <https://www.burlingtonproperty.com.au/sale/qld/city-north/ashgrove/residential/house/8196828>



**Elizabeth Wright**  
07 3510 8222



GROUND FLOOR



FIRST FLOOR



112 Wardell Street **ASHGROVE**

4 | 2 | 207m<sup>2</sup>

All dimensions are approximate; they are subject to errors and inaccuracies and no liability will be accepted. Plans are shown for marketing purposes only.

**Burlington**  
PROPERTY AGENTS